

| Pos. Nr. | Description | 分解图号 | 中文名称 |
|----------|---------------------------|------|--------|
| 2 | Motor | 2 | 马达 |
| 15 | Rotor | 15 | 转子 |
| 16 | Clamping disc | 16 | 止挡片 |
| 17 | Star-tolerance-ring | 17 | 止滑环 |
| 18 | Toothed spring washer | 18 | 华司 |
| 19 | Socket head screw | 19 | 内六角螺丝 |
| 21 | Pump body | 21 | 泵浦主体 |
| 22 | Locating peg | 22 | 定位销 |
| 23 | Socket head screw | 23 | 内六角螺丝 |
| 24 | Carbon vanes(kit) | 24 | 碳精片 |
| 25 | Locating peg | 25 | 定位销 |
| 28 | Lid | 28 | 面板 |
| 29 | Socket head screw | 29 | 六角螺丝 |
| 30 | Gasket | 30 | 面纸垫片 |
| 31 | Slotted pin | 31 | 避震销 |
| 32 | Nozzle | 32 | 进气嘴 |
| 33 | Cooler | 33 | 散热器 |
| 34 | Gasket | 34 | 散热器垫片 |
| 35 | Socket head screw | 35 | 内六角螺丝 |
| 46 | Fan | 46 | 风扇 |
| 48 | Key | 48 | 方键 |
| 49 | Washer | 49 | 垫片 |
| 50 | Shaft end bold | 50 | 末端止螺丝 |
| 61 | Filter cover | 61 | 过滤器盖 |
| 67 | Leaf spring | 67 | 弹簧垫片 |
| 72 | Filter cartridge(1x) | 72 | 滤芯 |
| 73 | Filter cartridge(1x) | 73 | 进气滤芯 |
| 74 | Filter cartridge(1x) | 74 | 排气滤芯 |
| 76 | Socket head screw | 76 | 内六角螺丝 |
| 77 | Sealing ring | 77 | 密封垫片 |
| 78 | O-ring | 78 | O型圈 |
| 83 | Protecting hood | 83 | 保护盖 |
| 84 | Tube flexible | 84 | 软管 |
| 85 | Rubber element | 85 | 橡胶垫 |
| 86 | Washer | 86 | 华司 |
| 87 | Nut | 87 | 螺母 |
| 88 | Protecting hood | 88 | 保护盖 |
| 89 | Spacer | 89 | 橡胶缓冲器 |
| 90 | Socket head screw | 90 | 六角螺丝 |
| 91 | Rubber element | 91 | 橡胶垫 |
| 92 | Edge protection | 92 | 软管 |
| 94 | Foot | 94 | 边缘保护内套 |
| 95 | Rubber element | 95 | 橡胶垫 |
| 96 | Spacing collar | 96 | 隔热橡胶 |
| 97 | Socket head screw | 97 | 六角螺丝 |
| 98 | Washer | 98 | 垫片 |
| 101 | Valve disc | 101 | 吊环垫片 |
| 102 | Rubber bushing | 102 | 吊环O型垫 |
| 103 | Spacer tube | 103 | O型环内套 |
| 104 | Ring screw | 104 | 吊环 |
| 124 | Vacuum regulating valve | 124 | 真空调节阀 |
| 125 | Pressure regulating valve | 125 | 压力调节阀 |
| 127 | Silencer | 127 | 消音器 |
| 132 | Plug | 132 | 堵头 |
| 133 | Plug | 133 | 堵头 |

7.0 保证函

亚米拉自动化技术(苏州)有限公司保证所有提供的产品从出货之日起十二个月内,或者安装之日起一年以内不会有材料和工艺缺陷。在此期间必须做出声明,明是有限的更换或维修声明有缺陷的零部件。为防止由AMILA采购的组件(诸如:启动器、控制器、机械密封件、马达等等)制造商的保证将延伸到其采购商,我们的保将取代所有制造商的保证。保养项目的更换,包括但不限于包装、油封、轴承、线圈等等。关于正常的保养服务不覆盖在此保证函以内。

此有限保证函,仅当产品正确安装,按照操作手册正常使用和维护时才有效。保证函不包括产品在保证期间未经工厂授权而错误使用、疏忽、更改或者维修而引起的质量问题。如果工作条件不符合我司要求,如不正确的电压或者水压、过高的环境温度或者其他它将影响产品功能和寿命的环境条件,都将导致保证函无效。一定要获得退回零部件为保修的许可,并将所有退回零部件先寄到工厂。关于邮寄地址(请参照前封面)。检测后,如果发现产品或者零部件是有缺陷的,原则上将免费维修或更换。另外,如果被确定为不是我公司的责任,那么需要收取维修或更换配件的费用。废旧或按特殊定单制造的零部件或产品是不可退回的。

本保证只适用于以上陈述及之前约定的期限。在任何情况下,AMILA公司的最大责任将不超过被声明缺陷的产品、零部件或组件的合同价格:AMILA对于任何因有缺陷的设备引起的任何特殊、间接或相因而生的损害不负有责任。除包含在本有限保证函中的条款外,没有任何延伸的暗示或特殊保证。

特别申明:

- ① 客户须严格按照我司指定的黄油品牌和型号(德国克鲁勃GY193型)给真空泵定期(每30天一次)加注黄油以润滑轴承,确保轴承和真空泵的使用寿命;
- ② 真空泵里面的空气滤芯视情况最长不超过30天,用高压空气进行清洁,以确保真空泵吸气和排气顺畅;
- ③ 如客户未按要求保养或加注润滑黄油,那一刻起,我司真空泵的保固期到此结束;
- ④ 质量保固期限:一年(每天8小时工作制,即以3000个小时为基准)。

AMILA

Vacuum pumps & compressor

AE-SR 10-16-25-40 操作使用说明书 (Operating Instructions)



亚米拉自动化技术(苏州)有限公司

电话: 0512-66365228

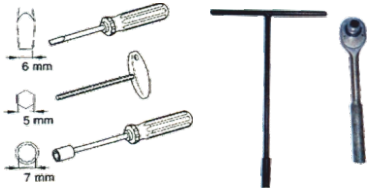
地址: 苏州市吴中区北官渡路7号

传真: 0512-66365628

网址: <http://www.amila-tech.cn>

AMILA - 真空泵 AE-SR

1. 使用工具 (Tools)

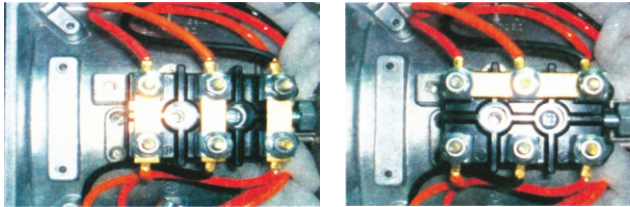


| | | | |
|---------------------|--------------|-------------------|------|
| Design in Australia | | Year | XXXX |
| Serial No. | | XXXX | XXXX |
| Type | XXXXXXXXXXXX | R/B/A | |
| Pumping Speed | XXXX | l/min | |
| Motor Rating | XXXX | KW | |
| Inlet Capacity | XXXX | m ³ /h | |
| Vacuum | XXXX | mbar | |
| Pressure | XXXX | mbar | |

製造番號 (Index)
型號 (Option)

Service:
Tel : 0512-66365228
Fax : 0512-66365628
E-mail: sales01@amila-tech.com
www.amila-tech.cn

2. 安装&马达 (电机) 连接(Installation&Motor Connection)



电压接法 (Low Voltage): 三相 3Φ 220V 电压接法 (High Voltage): 三相 3Φ 380V 周围环境温度不超过摄氏45°C
Ambient temperatures must not exceed 45°C

在安装真空泵浦/压缩机时, 应考虑到易于保养维修。真空泵浦(压缩机)于周围隔墙壁之间, 空间至少不低于10公分, 以保证冷却所需的空气流动通无阻。在消音罩内进行安装工作时, 请先向公司咨询连接。周围环境温度不超过摄氏45°C。

It is recommended to install the pumps with easy access for maintenance. Clearance between compressors and djacent walls should be no less than 10cm of free space in order to ensure sufficient air flow for cooling . Contact **AMILA** Prior to installation under noise insulation canopies. Ambient temperatures must not exceed 45°C.

真空泵浦/压缩机的电源连接方式应符合规定, 注意遵守EN60204T1.马达连接可按照接线盒内的电路图或备好插头进行, 此工作祇能由专职电工完成, 注意检查连接电压及频率。配置电机安全开关, 按电机额定电流进行设置(数据见电机型号牌)。每小时内次数不超十次。

让电机稍作回转, 检查其转向是否正确(参照电机壳上之箭头), 若转向不对时, 更改方向。

Connect the pump to the electricity supply observing all applicable safety regulations. Comply with EN 60204 T1. Connect motor based on connecting diagram(in terminal box) or ready made plugs. This work should be carried out by an experienced out by an experienced electrici-an only. Check for connecting voltage and frequency. Avoid more than 10 switches per hour. Install motor circuit-breaker and set to nominal motor current .(For data see motor rating plate). Brieflystart motor and check rotation(arrow on casing).Exchange phases if rotation is incorrect.

3. 用途 (Application)



VE 系列 吸气口径(Inlet_port): G3/4 "

排气口径(Outlet_port): G3/4 "



BVT/DE系列 吸气口径(Inlet_port): G3/4 "

泵浦可以使用产生真空(VE)或超压力(DE)入口空气必须为标准干燥大气空气。泵浦为干式运转。避免油雾进入此项规格有效于800公尺以下之海平面高度。

AMILA - 真空泵 AE-SR

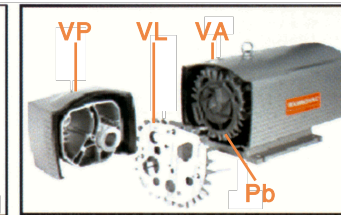
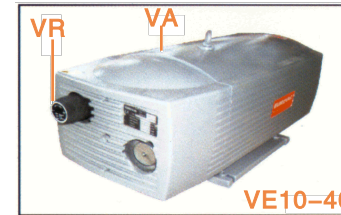
The pumps can be used to generate a vacuum(VE)or over pressure(DE). Inlet air must be standard dry atmospheric air. The pumps are dry-running. Avoid intake or oil mist. The specification is valid up to a height of 800 m above sea level.

4. 保养 (Maintenance)

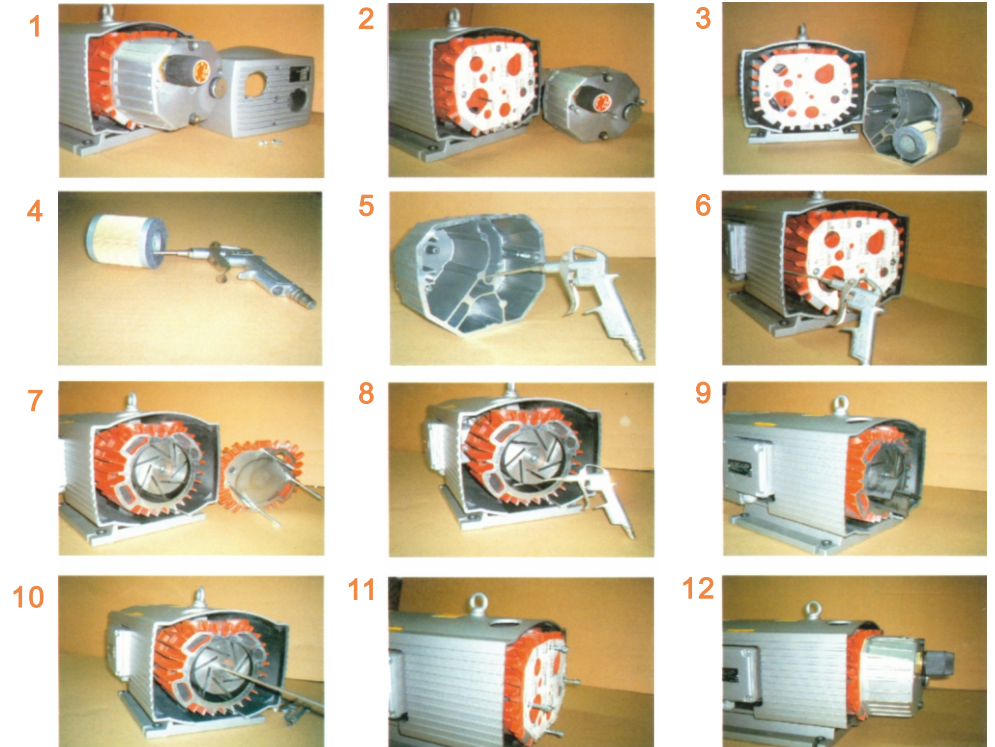
经常性的维护保养可使真空泵浦/压缩机保持最佳工作状态, 维护保养的周期取决于使用情况及工作条件。

Maintain pump regularly to achieve the best operating results. Maintenance intervals will depend on the pumps use and ambient conditions.

5. 更换碳精片步骤 (The procedure for how to replace the carbon vanes)



VR: 真空调压阀 (Vacuum regulating valve)
VA: 真空吸入口 (Intake of vacuum)
VP: 过滤器保护盖 (Protecting hood of filter)
VL: 面板盖 (Lid)
Pb: 气缸 (Pump body)



AMILA - 真空泵 AE-SR

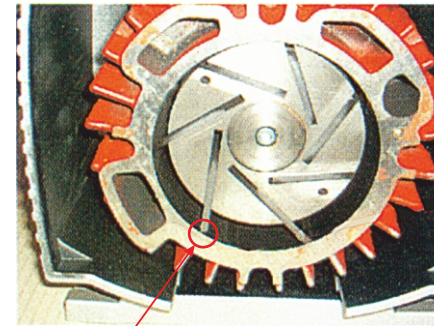


注意 (Note) :

1. 更换碳精叶片时总电源须切断, 以确保人员安全。
Before commencing replacement switch off electricity to ensure that the person whose safety.
2. 请勿高温拆卸、检修泵浦, 以免高温烫伤。
Do not disassemble or maintain the pump to avoid any hurt during high temperature phase.

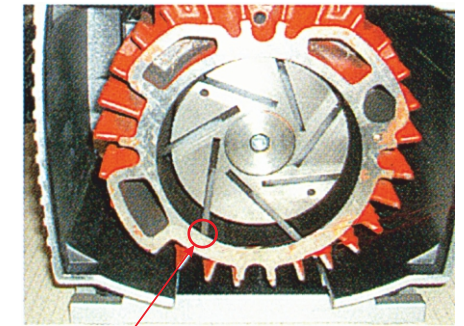
- Picture 1.** 使用5mm扳手放松2颗螺丝, 取下保护盖。
Loosen 2 Socket head screws(pos.90) and remove the protecting hood by 5mm hexagon wrench key.
- Picture 2.** 放松3颗螺丝, 取下过滤器盖。
Loosen 3 Socket head screws (pos.76) and remove the protecting hood of filter.
- Picture 3.** 放松VL-4颗螺丝。(勿高温拆卸面板)取下面板盖(VL)。
Loosen 4 socket head screws (POS.29)of VL (Lid) and remove the VL (Lid).
(Do not disassemble the SD during high temperature phase)
- Picture 4.** 清洁过滤器(注意由内向外吹)。
Clean the filter (Note: Blow out dirt from inside to outside by compressed air.
- Picture 5.** 清洁过滤器盖(注意由内向外吹)。
Clean the protecting hood of filter and Blow out dirt from inside to outside using compressed air.
- Picture 6.** 使用高压空气清洁Pb。
Blow out dirt in cooling air channel Pb by compressed air.
- Picture 7.** 取下面板盖及碳精叶片。
Remove the VL and carbon vanes from the rotor.
- Picture 8.** 使用高压空气清洁气缸内部。
Blow out dirt in cooling air channel Pb (pump body) by compressed air.
- Picture 9.** 装上碳精叶片新品(注意碳精叶片方向)。
Install the carbon vanes in the rotor.(please notice the direction of carbon vanes).
- Picture 10.** 碳精叶片装好, 逆时针方向旋转注意碳精叶片甩出时是否是水平位置與顺畅。
After install the carbon vanes, urn the rotor in the reverse direction and look the carbon vanes to fall from the rotor smoothly in the horizontal position.
- Picture 11.** 装上面板盖及锁紧4颗螺丝。
Install the VL(Lid) and tighten 4 socket head screws evenly (Pos.29).
- Picture 12.** 锁紧过滤器盖螺丝。
Tighten 4 socket head screws on the VL(Lid) evenly.
- Picture 13.** 锁紧保护盖螺丝。
Tighten 3 socket head screws on the protecting hood of filter evenly.
- Picture 14.** 更换完成。
Replacement finish.

AMILA - 真空泵 AE-SR



碳精片安装错误方向

The carbon vanes are installed by incorrect direction



碳精片安装正确方向

The carbon vanes are installed by correct direction

AMILA
Vacuum Pumps & compressors

AE-SR 40

H= 43 mm(正常)
↓
少于28 mm(建议更换)

L= 95 mm
H= 43 mm
B= 4 mm

www.amila-tech.cn

滤芯装在盖板VP的后面, 需根据灰堆积进行清洗。清洗时用压缩空气槽过滤器由内往外吹。(必须更换阻塞, 浸油或沾上油脂的滤芯, 在灰尘量很大的情况下, 需附加安装空气过滤器)并用压缩空气吹出冷风道KK槽之脏物。由于与机壳体内壁的摩擦, 碳精片属耗材, 散热效果差, 会使碳精片磨损加速。

The filter cartridges are inserted behind the enclosure cover VP. Clean depending on dust accumulation. Blow out filter from inside to outside. Replace blocked ,oily or greasy cartridges. Additional filters are available for operation in very dusty environments.Blow out dirt in cooling air channels Pb by compressed air. The vanes are subject to abrasion from the walls of the enclosure.

在进行3000小时之后或至少每一年, 应检查叶片的宽度(24小时运转泵浦, 需缩短保养周期) 保养维修时须打开壳体盖VP和面板盖VL。更换零件时须用干燥的压缩空气将壳体吹干。 Check vane width every 3,000 operating hours or annually (It has to shorten the maintenance intervals by 24 operating hours daily).Remove housing cover VP and side cover VL for this. on replacement blow out enclosure by dry compressed air.

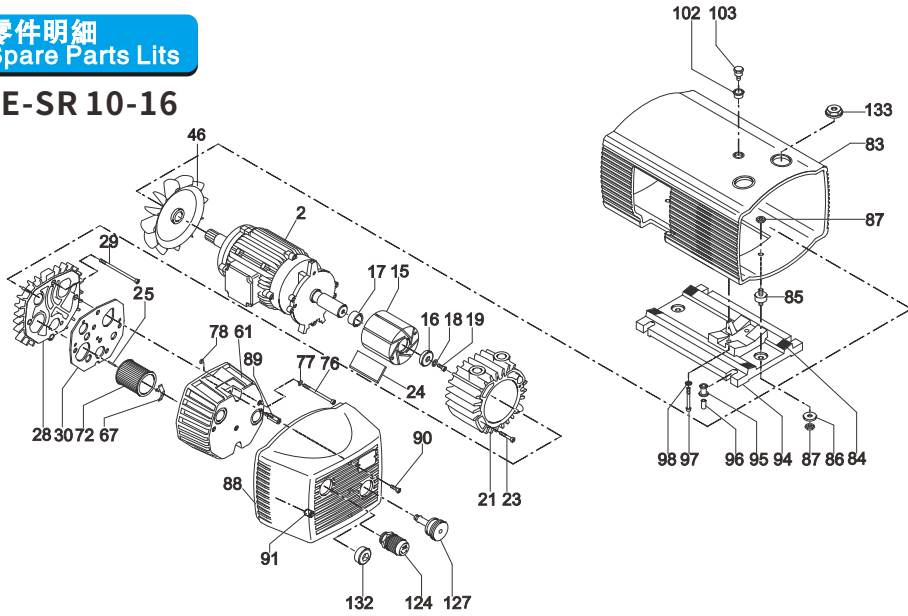
碳精片宽度 (最小值mm) :
Width of vanes (min. mm):

| 型号 | 宽度正常尺寸 | 宽度少于建议更换尺寸 |
|----------|--------|------------|
| AE-SR 10 | 24 mm | 18 mm |
| AE-SR 16 | 35 mm | 22 mm |
| AE-SR 25 | 43 mm | 28 mm |
| AE-SR 40 | 43 mm | 28 mm |

AMILA - 真空泵 AE-SR

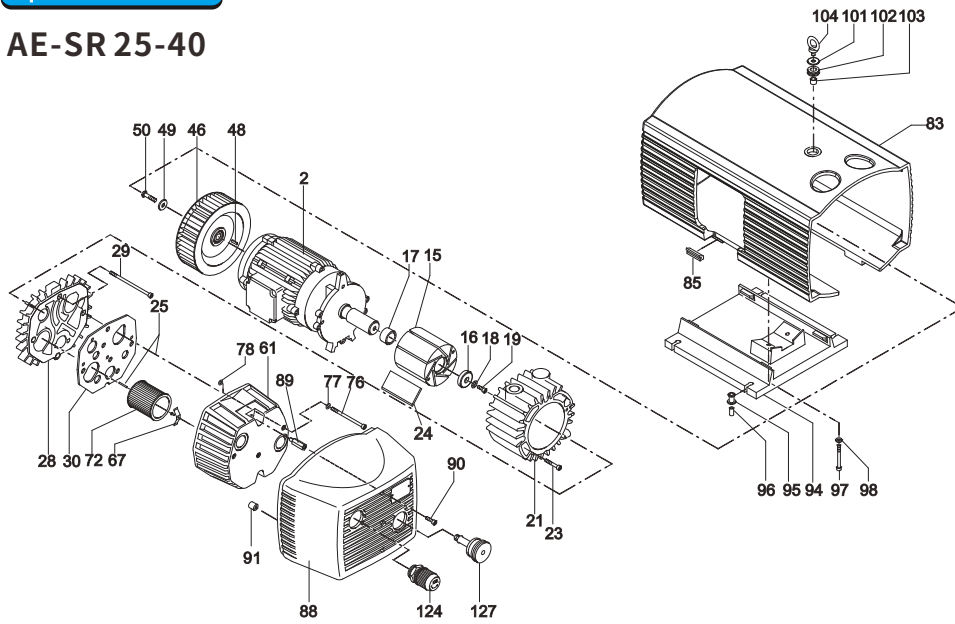
零件明細
Spare Parts Lists

AE-SR 10-16

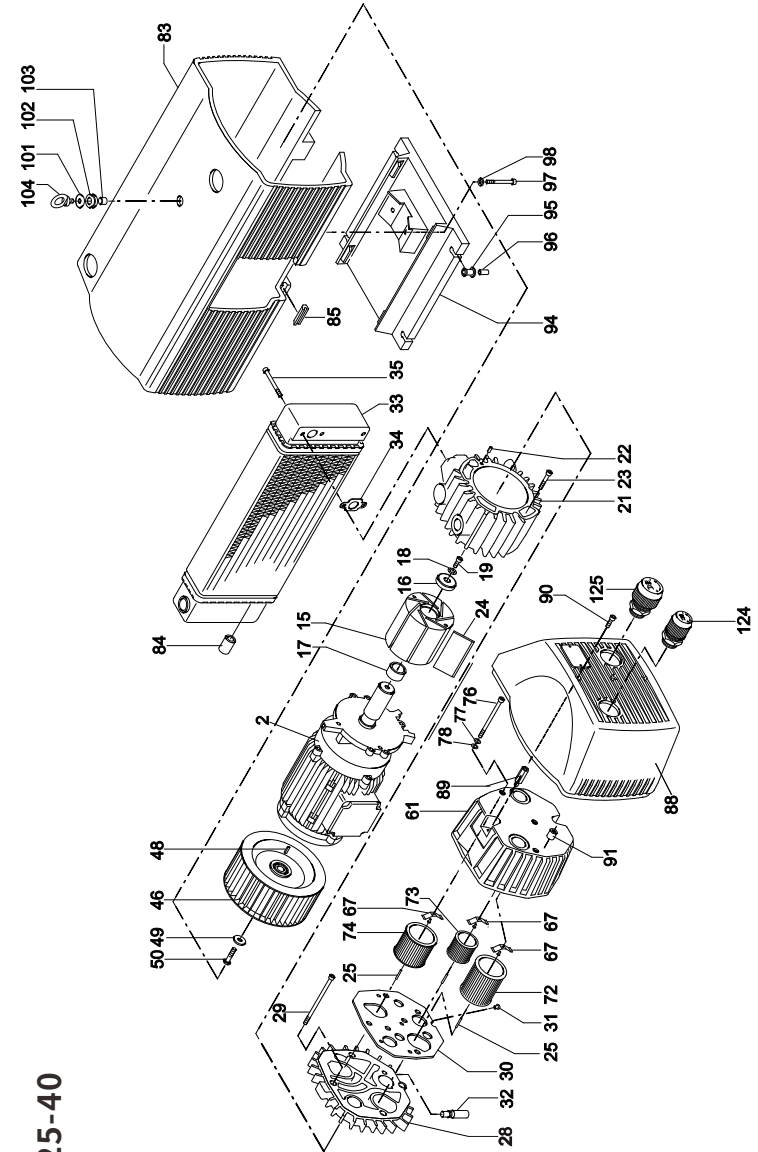


零件明細
Spare Parts Lists

AE-SR 25-40



AMILA - 真空泵 AE-SR



零件明細
Spare Parts Lists

AE-SR 25-40

